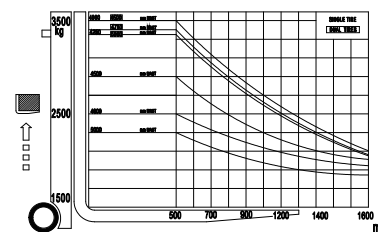
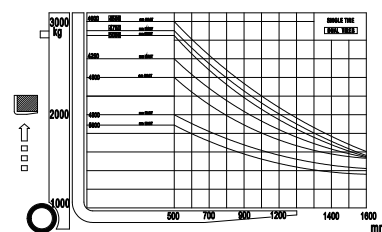
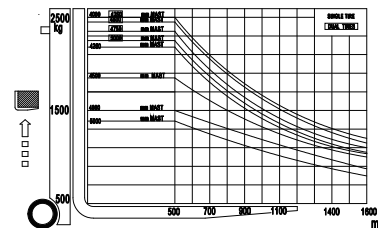
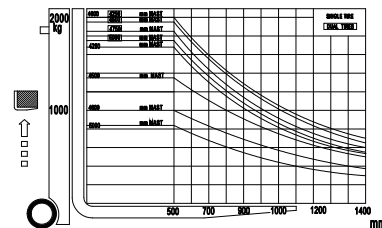
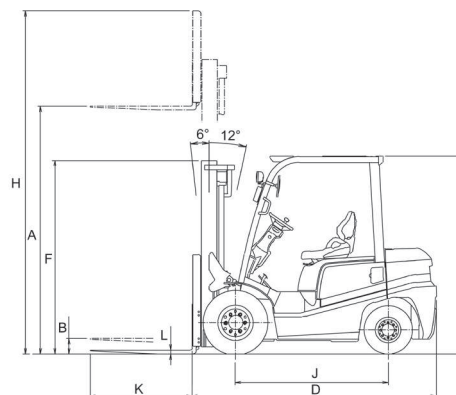
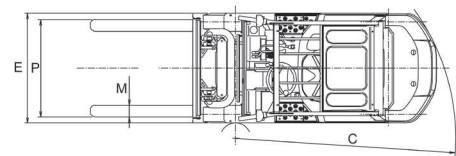


SPECIFICATIONS

LI-ION BATTERY POWERED FORKLIFT TRUCK 2.0/2.5/3.0/3.5T (PARAMETER AND PERFORMANCE)

Characteristics	1		Microlift					
	2		FB20P	FB25P	FB30P	FB35P		
	3		kg	2000	2500	3000	3500	
	4		mm	500	500	500	500	
	5			Electric	Electric	Electric	Electric	
	6	Wheels (x = driven)	Front / Rear	2x/2	2x/2	2x/2	2x/2	
	7		kg	3340	3700	4400	4950	
Dimensions	8		mm	3000	3000	3000	3000	
	9		mm	105	110	165	170	
	10		LxWxT	mm	1070x120x40	1070x120x40	1070x125x45	1070x125x45
	11		Fwd. / Bwd.	deg.	6/12	6/12	6/12	6/12
	12			mm	2485	2555	2705	2760
	13			mm	1150	1150	1225	1225
	14			mm	2030	2030	2075	2075
	15			mm	4030	4030	4250	4250
	16			mm	2070	2070	2090	2140
	17			mm	1045	1045	1070	1120
	18			mm	2170	2240	2400	2470
	19		Load Distance (Centerline of front axle to front face of forks)	mm	450	450	480	495
20		Basic Right Angle Stacking Aisle Width (Add load length and clearance)	mm	3925	3995	4145	4185	
Performance	21	Travel, Max.	Full Load	km/h	14	14	13	12
			No Load	km/h	15	15	15	15
	22	Lifting	Full Load	mm/sec	450	450	350	300
			No Load	mm/sec	500	500	400	400
	23	Lowering	Full Load	mm/sec	450	450	450	420
			No Load	mm/sec	550	550	450	450
24		Max. Gradeability*	Full Load	%	20	20	18	15
			No Load	%	20	20	20	20
25	Brake	Service (Foot)	Regenerative braking & Hydraulic-Foot pedal					
		Parking	Mechanical-Hand lever					
Chassis & Wheels	27	Number	Front / Rear	2/2	2/2	2/2	2/2	
		Size	Front	7.00-12-12PR(I)	7.00-12-12PR(I)	28X9-15-12PR(I)	28X9-15-12PR(I)	
	Rear		6.00-9-10PR(I)	6.00-9-10PR(I)	6.50-9-10PR(I)	6.50-9-10PR(I)		
29								
30		Wheelbase(J)	mm	1600	1600	1700	1700	
Battery	31		V/AH	80V210Ah	80V210Ah	80V210Ah (80V460Ah Option)	80V210Ah (80V460Ah Option)	

Remarks: Zhejiang Microlift Electric Technology Co., Ltd reserves the right to make any changes without notice concerning specifications detailed in this brochure.



Li-ion Electric Forklift

Li-ion Battery Powered



Forklift Truck 2.0/2.5/3.0/3.5T

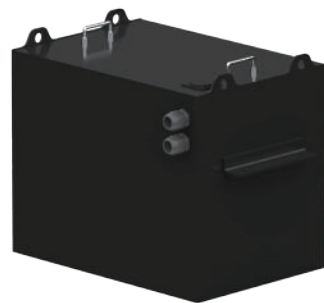
- IC forklift design with li-ion technology
- Large operator compartment, big wheels and strong chassis
- Standard components for easy service and maintenance
- Applies to any workplace (indoor and outdoor)
- The Li-ion battery offers a longer run-time

Microlift

material handling -solution

Lithium-ion Technology

- **Security:** no self-ignition.
- **Productivity:** 2-hour fast charging for frequent and demanding requirement.
- **Green:** no odor, no noise, zero-emission.
- **Maintenance free and Reliability:**
3-year battery warranty,
4000 times charge-discharge cycles,
more than 8 years long service.



Innovative Vehicle Design

- **Durable** IC forklift Chassis.
- **Big Wheels** with better clearance (indoor and outdoor).
- **Minimal** vibration and noise to operator, eliminating the driver's fatigue.
- **Large** operating space, improving driver's comfort.
- **50%** larger than traditional electric trucks.



Excellent Ergonomics

- The dashboard is placed overhead and can be seen when the driver lifts her/his head.
- The emergency buttons can be pressed easily.

Driver-Oriented Layout

- **Small** diameter (300mm) steering wheel improves vehicle maneuverability.
- The parking lever positioning to the right of the steering wheel for easier operation.
- **Enlarged** brake pedal and regenerative braking function effectively reducing the driver's fatigue.



Low Costs

- **Low purchase cost:** only at the price of diesel forklift.
- **Low energy cost:** saving 60%-70% of energy cost with li-ion battery.
- **Low maintenance cost:** no engine oil, no oil filter, no air filter.



Optimum Solutions (Option)

- **Reversing camera:** providing comfortable operation, safety and efficiency.
- **Rear blue light:** reminding pedestrians when reversing.
- **Ergonomic back-up handle with horn button:** improving both driver's comfort and reversing safety.
- **The Operator Presence System (OPS):** preventing accidents and keeping workers in the operating areas safe.

